

MILFORD PLAZA

143 - 211 CHERRY STREET | MILFORD, CT 06460

AVAILABLE 1,505sf - 50,306sf



ANCHORED BY



UNDER NEW OWNERSHIP FACADE IMPROVEMENTS COMING



PROPERTY INFORMATION

- GLA 182,128 sf
- Over 900 parking spaces
- Located within dominant retail corridor, anchored by the Connecticut Post Mall
- Milford Plaza is easily accessed by I-95 within 1/2 mile
- Excellent visibility, pylon signage, and signalized entrance
- Traffic Count: 12,000 vehicles per day, and signalized entrance

SPACE DETAILS

- Available 1,505sf - 50,306sf

AREA DEMOGRAPHICS

2022 DEMOGRAPHICS	3 MILE	5 MILE	7 MILE
POPULATION	45,546	106,465	240,891
MEDIAN HH INC	\$93,479	\$94,124	\$82,404
AVERAGE HH INC	\$130,954	\$122,762	\$103,792



www.CharterRealty.com

FOR MORE INFORMATION CONTACT:

PETER H. LEVINE | 203.683.1567 | Peter@CharterRealty.com

MILFORD PLAZA

143 - 211 CHERRY STREET | MILFORD, CT 06460

TENANTS / AVAILABILITY

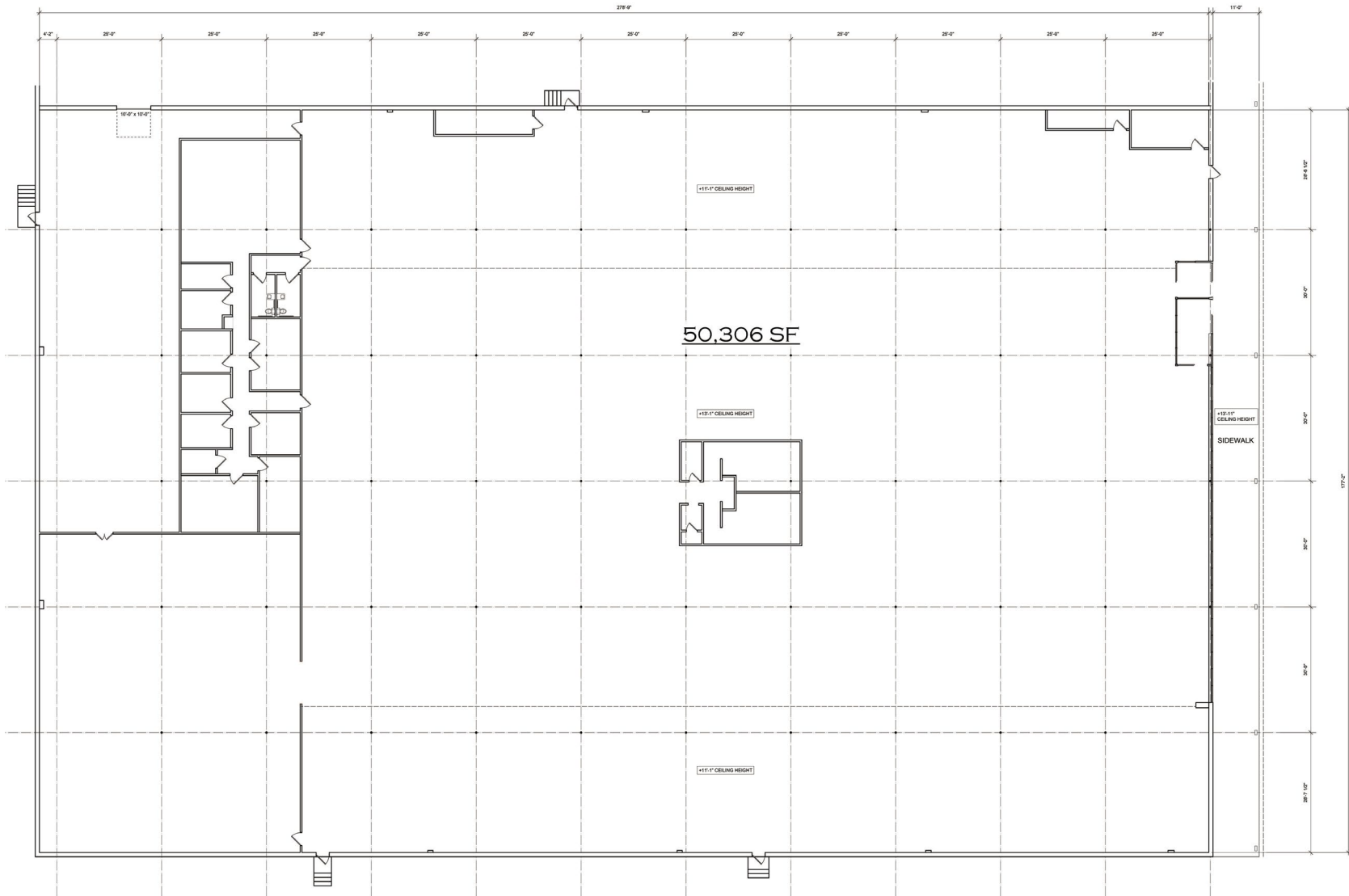
#	TENANT	Sq. Ft.
01	St. Vincents Health & Wellness	5,000
02	Mathnasium	2,000
03	Dental Office	3,581
04	Edible Arrangements	1,800
05	Kidsense	1,800
06	Available	1,505
07	School of Rock	3,500
08	Available	50,306
09	Korean BBQ (Coming Soon)	5,500
10	Dollar Tree	15,000
11	Planet Fitness	19,264
12	Asian Spirits	2,680
13	Title Boxing Club	2,800
14	UPS	1,800
15	Whale Tea	1,334
16	Nail Salon (Coming Soon)	1,748
17	Available	2,890
18	Cloud 9 Day Spa	978
19	Indian Restaurant	3,000
20	G Mart	58,895



Available Lease Out Occupied

MILFORD PLAZA

143 - 211 CHERRY STREET | MILFORD, CT 06460



CHARTER REALTY & DEVELOPMENT

Information contained in this document has been reviewed and approved by Charter Realty and Development; however, errors sometimes occur. Charter disclaims any warranty of any kind, expressed or implied, as to any matter whatsoever relating to this service. In no event shall Charter be liable for any indirect, special, incidental or consequential damages arising out of any use of or reliance on any content or materials contained herein.

MILFORD PLAZA

143 - 211 CHERRY STREET | MILFORD, CT 06460

